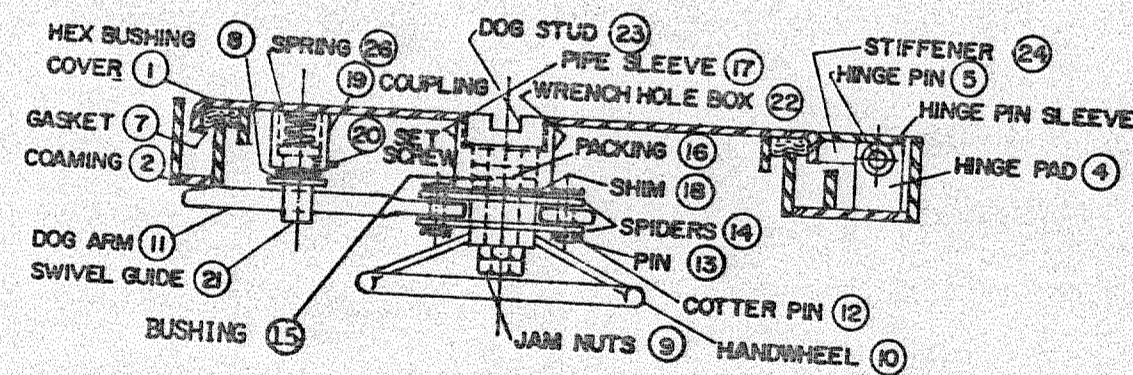


PLAN



SECTION

SCHEDULE OF MATERIALS		
PC. NO.	MATERIAL	REMARKS
1	MILD STEEL	3/8" PL
2	MILD STEEL	3/8" X 6" F.D.
3	MILD STEEL	
4	MILD STEEL	
5	COLD FINISH	
6	BRASS	
7	NEOPRENE	
8	MILD STEEL	
9	MILD STEEL	
10	MILD STEEL	
11	MILD STEEL	
12	BRASS	
13	BRASS	
14	MILD STEEL	
15	DELFIN	
16	GRAPHITE	
17	MILD STEEL	
18	BRASS	
19	MILD STEEL	
20	MILD STEEL	
21	BRASS	
22	MILD STEEL	
23	BRASS	
24	MILD STEEL	
25	MILD STEEL	
26	SPRING STEEL	
27	STEEL	3/8" X 2" F.B.

MISSISSIPPI MARINE
 GREENVILLE, MISS.
 QTY - 1
 MAIN DIM. FR. 32 1/2
 LOCATION - APPROX 6" OFF & TO STBD
 S.O. # 2572
 P.O. # 24146
 CEN-TEX MARINE FABRICATORS, INC.
 SMITHVILLE, TEXAS
 QUICK ACTING WATERTIGHT FLUSH HATCH
 DRAWING NO. 205